

2007
ANNUAL STATISTICS

PHYSICAL REVIEW
and
PHYSICAL REVIEW LETTERS

In 2007, the total number of manuscripts submitted to *Physical Review* and *Physical Review Letters* was over 33,000, almost 5% more than in 2006. The pattern of growth in published articles since 1963 is shown in Figure 1. Monthly receipts over the past three years are presented in Figure 2, showing a fairly consistent pattern of seasonal fluctuations in submissions.

Reflecting the international nature of physics and of the *Physical Review* journals, 77% of total submissions were from outside the US in 2007 (see Figure 3). Submissions from Western Europe constitute 32% of total submissions, a larger share than that of US submissions which fell to 23% (see Table VIII). Submissions from the Pacific Rim are 25% of the total.

To deal with the large number of submitted manuscripts over 100,400 referrals to referees were made in 2007. The referee pool in our database now contains more than 42,000 referees.

Production-acceptable electronic manuscript submissions increased by 8%, to over 28,300 (92% of direct submission receipts). 98% of articles were published using authors' L^AT_EX / REVT_EX / MS Word files in the composition process (see Figure 4).

Detailed statistics relating to the journals are given in Tables I-VIII.

Table I. Number of articles and of “Short Papers” received and published by *Physical Review* 1969-2007. “Short Papers” include Brief Reports, Comments, and Rapid Communications in 1981-2007; they include Comments and Addenda in 1969-1980.

	Articles		Short Papers		Total	
	Received	Published	Received	Published	Received	Published
2007	17232	11480	4402	2233	21634	13713
2006	16469	11272	4154	2265	20623	13537
2005	15827	11522	4029	2483	19856	14005
2004	14750	10025	3961	2284	18711	12309
2003	14054	9396	3853	2141	17907	11537
2002	13273	10639	3800	2670	17073	13309
2001	12956	9107	3685	2402	16641	11509
2000	12372	8701	3616	2472	15988	11173
1999	12063	8188	3738	2381	15801	10569
1998	11821	7845	3749	2426	15570	10271
1997	11280	7652	3579	2435	14859	10087
1996	11173	7583	3779	2435	14952	10018
1995	10951	7579	3642	2505	14593	10084
1994	10443	7575	3549	2423	13992	9998
1993	9371	7040	3334	2394	12705	9434
1992	8472	6043	3150	2208	11622	8251
1991	7652	5439	2912	2076	10564	7515
1990	7118	5162	2761	1894	9879	7056
1989	6590	5210	2744	2129	9334	7339
1988	6217	4776	2582	1994	8799	6770
1987	5840	4211	2623	1890	8463	6101
1986	5264	3932	2096	1693	7360	5625
1985	4697	3566	1993	1554	6690	5120
1984	4309	3154	1810	1364	6119	4518
1983	4023	3142	1556	1216	5579	4358
1982	3770	3052	1455	1160	5225	4212
1981	3936	3129	1463	807	5399	3936
1980	4043	3009	528	403	4571	3412
1979	3855	2945	588	396	4443	3341
1978	3784	3107	488	431	4272	3538
1977	4003	3009	555	440	4558	3449
1976	3913	2905	600	455	4513	3360
1975	3948	2951	595	441	4543	3392
1974	3754	2951	570	520	4324	3471
1973	3838	3249	625	505	4463	3754
1972	3899	2915	615	394	4514	3309
1971	3730	2862	482	394	4212	3256
1970	3640	2926	443	330	4083	3256
1969	3755	3084	298	110	4053	3194

Table II. Numbers of articles and short papers received and published by individual *Physical Review* journals in 2007.

	Articles		Short Papers		No. Pages Published	% Pages Published
	Received	Published	Received	Published		
A	2842	1911	756	374	17491	15.2%
B1	3098	2075	963	521	19798	17.2%
B15	3545	2625	1149	568	24420	21.3%
C	927	745	247	194	8329	7.2%
D1	1170	822	200	122	10754	9.4%
D15	2206	1203	315	134	14804	12.9%
E	3211	1952	770	320	19333	16.8%
ST-AB	193	129	2	0	1345	1.2%
ST-PER	40	18	0	0	224	0.2%
Total	17232	11480	4402	2233	116498	

Table III. Papers received by the short-papers section of *Physical Review* in 2007.

	Direct Submissions			Transfers from PRL		
	Brief Reports	Comments	Rapid Communications	Brief Reports	Comments	Rapid Communications
A	267	47	154	44	0	244
B1	249	29	247	112	0	326
B15	277	24	319	123	0	406
C	98	9	84	4	0	52
D1	64	3	79	11	0	43
D15	125	16	92	19	0	63
E	232	30	176	46	0	286
ST-AB	0	2	0	0	0	0
Total	1312	160	1151	359	0	1420

Table IV. Fraction of papers not published (which includes those rejected, withdrawn, recommended for publication elsewhere, etc.) by the *Physical Review* journals for 1996-2006. Many papers submitted in 2007 are still active; hence the numbers for that year are still incomplete and are not listed.

	1997	1998	1999	2000	2001	2002	2003	2004	2005	2006
A	36.3	34.2	33.5	34.1	34.8	35.9	38.0	36.2	38.3	36.2
B1	32.8	31.7	30.4	30.4	29.5	27.7	31.9	30.8	31.4	33.2
B15	31.6	29.8	28.6	30.0	28.1	26.4	28.9	31.2	29.0	30.4
C	22.9	21.0	21.1	23.3	22.1	23.6	21.6	22.6	23.7	25.5
D1	23.9	22.3	23.9	20.5	23.5	23.0	24.8	22.7	22.6	22.6
D15	36.8	38.0	36.8	38.0	38.0	37.2	38.2	41.4	41.8	41.1
E	29.3	31.4	32.7	30.0	27.5	31.0	35.0	38.3	41.0	44.7
ST-AB		26.9	24.6	38.9	37.5	31.5	33.1	29.4	30.2	37.7
ST-PER									60.5	65.9
Average	31.4	30.7	30.3	30.4	29.6	29.8	32.4	33.3	34.0	35.3

Table V. Distribution of receipts among the *Physical Review* journals 1970-2007. Note that in 1993 *Physical Review A1* became *Physical Review A* and *A15* became *E*.

	Total Number of Articles and BCR or CA Received											
	A1	A	B1	B15	C	D1	D	D15	E	ST-AB	ST-PER	Total
2007		3598	4061	4694	1174	1370		2521	3981	195	40	21634
2006		3360	3769	4415	1077	1316		2330	4116	199	41	20623
2005		3208	3679	4208	1134	1377		2069	3977	160	44	19856
2004		2919	3597	3994	1107	1222		1937	3782	153		18711
2003		2712	3609	3653	1108	1189		1882	3621	133		17907
2002		2540	3442	3360	1028	1273		1812	3476	142		17073
2001		2474	3517	3357	1028	1218		1693	3258	96		16641
2000		2278	3413	3329	1043	1157		1571	3066	131		15988
1999		2181	3292	3403	1122	1250		1505	2983	65		15801
1998		2073	3307	3433	1089	1220		1533	2866	49		15570
1997		2075	3247	3347	1026	1132		1376	2656			14859
1996		2103	3341	3488	1038	985		1429	2568			14952
1995		1994	3374	3472	1082	986		1327	2358			14593
1994		1962	3210	3327	1009	1021		1338	2125			13992
1993		1797	3030	2928	995	970		1244	1741			12705
1992	1651		1518	2818	2760	911	835	1129				11622
1991	1533		1294	2693	2619	843	645	937				10564
1990	1520		1131	2460	2427	812	622	907				9879
1989		2352	2144	2348	897	662		931				9334
1988		2052	2109	2335	826	575		902				8799
1987		2006	1825	2200	880	602		950				8463
1986		1772	1271	2069	752	592		904				7360
1985		1488	1227	1814	754	572		835				6690
1984		1356	1147	1555	714	587		760				6119
1983		1242	964	1446	752	495		680				5579
1982		1154	883	1287	761	534		606				5225
1981		1125	875	1287	799	599		714				5399
1980		933	758	1013	718	507		642				4571
1979		828	705	995	730	540		645				4443
1978		799	682	906	678	535		672				4272
1977		827	702	940	741	686		662				4558
1976		873	728	963	671	618		660				4513
1975		796	794	953	738	607		655				4543
1974		854	674	884	738	545		629				4324
1973		934	654	954	674	622		625				4463
1972		793	717	988	713		1303					4514
1971		819	648	897	601		1247					4212
1970		790	604	866	603		1220					4083

Table VI. *Physical Review Letters* statistics. “Annual Page Total” excludes the indices. Relevant historical notes:

- Rapid Communications instituted 1 January 1981.
- Changed acceptance criteria in force 1 January 1982.
- Top-of-page makeup began 28 March 1983. Relaxation of 3.5 page limit to four pages follows (14% increase).
- New page size introduced 7 January 1985 (12% increase). (Net size increase is 28%; new length plus new page size.)
- 1989-1990 Review Panel for PRL Report, August 1991; implementation 1992.
- Only published Reply Comments counted as “Manuscripts Received” from 1 July 1985 – 31 December 1992.
- Reply Comments are not counted as “Manuscripts Received,” starting 1 January 1993 to present.
- Beginning 1 January 2001, “Annual Page Total” refers to published article pages.

	Annual Page Total	Total Manuscripts Received	Manuscripts Published/Received		Published Errata
			Letters	Comments	
1977	3218	2258	950/2258	--	76
1978	3550	2244	1034/2244	--	86
1979	3771*	2438	1075/2438	--	98
1980	3862	2498	1090/2498	--	101
1981	3617	2395	984/2252	48/143	64
1982	3779	2421	1017/2250	96/171	65
1983	4542	2902	1149/2702	101/200	79
1984	4950*	3116	1240/2864	115/252	91
1985	5697*	3405	1440/3143	164/262	90
1986	6186	3774	1525/3455	198/319	106
1987	5841	4110	1442/3787	191/323	98
1988	5784	4131	1391/3831	232/300	96
1989	5957	4200	1449/3844	230/356	103
1990	6662*	4483	1599/4136	199/347	76
1991	7195	5035	1760/4706	171/329	70
1992	7780	5466	1909/5104	189/364	61
1993	8565	5807	2088/5515	176/292	81
1994	7757	6188	1871/5900	218/288	68
1995	10075	6346	2428/6096	223/250	121
1996	10429*	6845	2533/6564	187/281	93
1997	10333	7260	2500/6982	202/278	55
1998	11771	7706	2847/7415	237/291	53
1999	11011	7933	2672/7669	197/264	56
2000	11807	8240	2853/7933	219/307	51
2001	12025*	8584	2916/8345	206/239	40
2002	12188*	8736	2961/8465	148/271	87
2003	12239**	9367	2962/9125	188/242	75
2004	14769**	9976	3575/9745	183/231	89
2005	15308***	10467	3692/10228	146/239	103
2006	15568**	10943	3757/10733	162/210	112
2007	14764	11397	3545/11188	144/209	125

* 53 issues; 52 in other years; ** 51 issues; *** 50 issues

Table VII. *Physical Review Letters* statistics by Table of Contents section headings 2000-2007. Comments are not included. The data refers to manuscripts received in the specified year and how many of them were subsequently published in that year or later. The subject areas are the ones defined by the journal's Table of Contents.

DATA KEY:	Published (% acceptance rate)				Letters only			
	Receipts for year (% total receipts)				(Comments not included)			
Section	2000	2001	2002	2003	2004	2005	2006*	2007*
General	166 (25)	209 (30)	228 (30)	300 (33)	411 (32)	427 (31)	479 (31)	334 (22)
Physics	672 (8)	699 (8)	769 (9)	897 (10)	1269 (13)	1393 (14)	1530 (14)	1499 (13)
Gravitation & Astrophysics	108 (29) 372 (5)	95 (26) 361 (4)	85 (21) 414 (5)	115 (25) 458 (5)	103 (25) 413 (4)	128 (27) 476 (5)	114 (23) 501 (5)	82 (16) 508 (5)
Elementary Particles	182 (39) 471 (6)	211 (41) 519 (6)	153 (34) 446 (5)	186 (42) 447 (5)	208 (42) 495 (5)	200 (42) 476 (5)	226 (42) 533 (5)	197 (35) 556 (5)
Nuclear Physics	127 (47) 272 (3)	131 (48) 272 (3)	109 (43) 256 (3)	113 (40) 283 (3)	128 (48) 269 (3)	109 (41) 268 (3)	115 (44) 259 (2)	90 (32) 281 (3)
Atomic, Molecular, & Optical	266 (51) 517 (7)	202 (42) 478 (6)	237 (48) 495 (6)	278 (48) 580 (6)	252 (44) 567 (6)	240 (38) 640 (6)	267 (39) 681 (6)	191 (28) 681 (6)
Nonlinear Dynamics, etc.	235 (32) 734 (9)	271 (33) 826 (10)	260 (31) 843 (10)	318 (36) 882 (10)	317 (35) 900 (9)	305 (33) 930 (9)	343 (34) 1014 (9)	228 (20) 1134 (10)
Plasma & Beam Physics	151 (44) 343 (4)	182 (49) 373 (4)	160 (46) 345 (4)	179 (50) 360 (4)	187 (48) 389 (4)	170 (46) 369 (4)	169 (44) 382 (4)	159 (36) 438 (4)
Condensed Matter Structure	523 (37) 1399 (18)	470 (35) 1357 (16)	499 (36) 1398 (17)	486 (35) 1400 (15)	489 (36) 1360 (14)	493 (33) 1495 (15)	465 (31) 1478 (14)	341 (23) 1491 (13)
Condensed Matter Electronic	800 (34) 2383 (30)	853 (33) 2576 (31)	842 (34) 2459 (29)	987 (37) 2680 (29)	1092 (37) 2923 (30)	1101 (37) 3007 (29)	1107 (35) 3180 (30)	783 (24) 3296 (29)
Interdisciplinary Physics	269 (36) 755 (10)	271 (31) 870 (10)	349 (34) 1033 (12)	392 (35) 1123 (12)	388 (34) 1154 (12)	376 (32) 1173 (11)	366 (31) 1166 (11)	266 (20) 1301 (12)
Total	2827 (36) 7918	2895 (35) 8331	2922 (35) 8458	3354 (37) 9110	3575 (37) 9739	3549 (35) 10227	3651 (34) 10724	2671 (24) 11185

* The data for papers published (and acceptance rate) are not complete; some papers submitted in 2007 may yet be published.

Table VIII. Manuscripts submitted to *Physical Review* and *Physical Review Letters* by geographic region (based on address of corresponding author).

Geographic Region	2005		2006		2007	
	Number	% Receipts	Number	% Receipts	Number	% Receipts
United States	7228	25.3	7215	24.4	7166	23.3
Canada	696	2.4	740	2.5	710	2.3
Latin America	1196	4.2	1262	4.3	1290	4.2
Western Europe	9114	31.9	9334	31.5	9905	32.2
Eastern Europe & FSU	1675	5.9	1739	5.9	1910	6.2
Middle East & Africa	906	3.2	1025	3.5	1125	3.7
Indian Subcontinent	1049	3.7	1104	3.7	1097	3.6
Japan	2155	7.6	2122	7.2	2048	6.6
China	2995	10.5	3432	11.6	3793	12.3
Other Pacific Rim	1525	5.3	1629	5.5	1757	5.7
Total	28539		29602		30801	

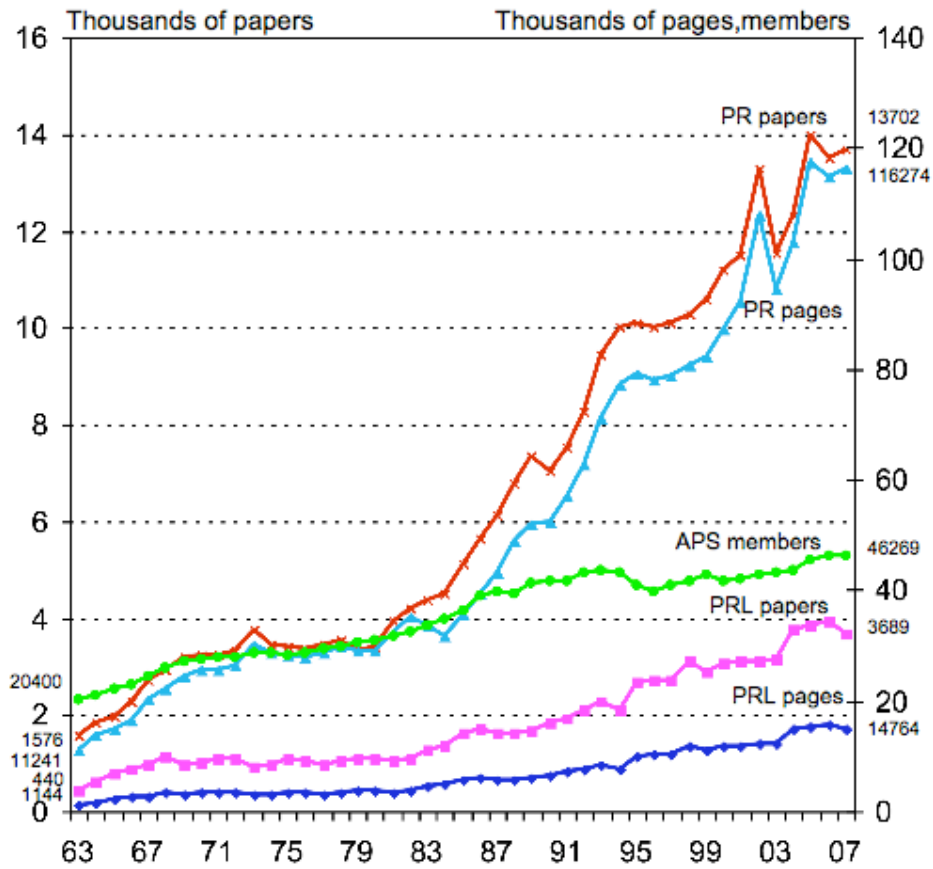


FIG. 1. Number of papers and corresponding pages published in *Physical Review* (PR) and *Physical Review Letters* (PRL) from 1963 through 2007. The PR figures include Comments, Communications, and Addenda in 1969-1980, and include Brief Reports, Comments, and Rapid Communications in 1981-2007; the PRL figures include Comments in 1974-1977 and 1981-2007. APS membership is given for comparison.

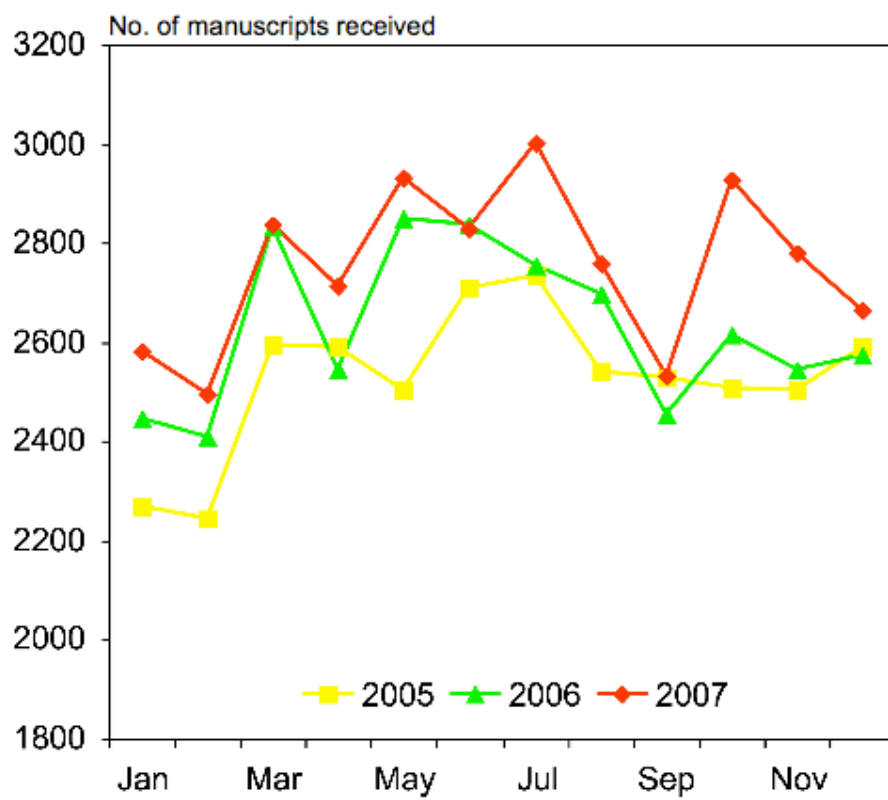


FIG. 2. Numbers of manuscripts submitted to *Physical Review* and *Physical Review Letters* each month for the years 2005-2007.

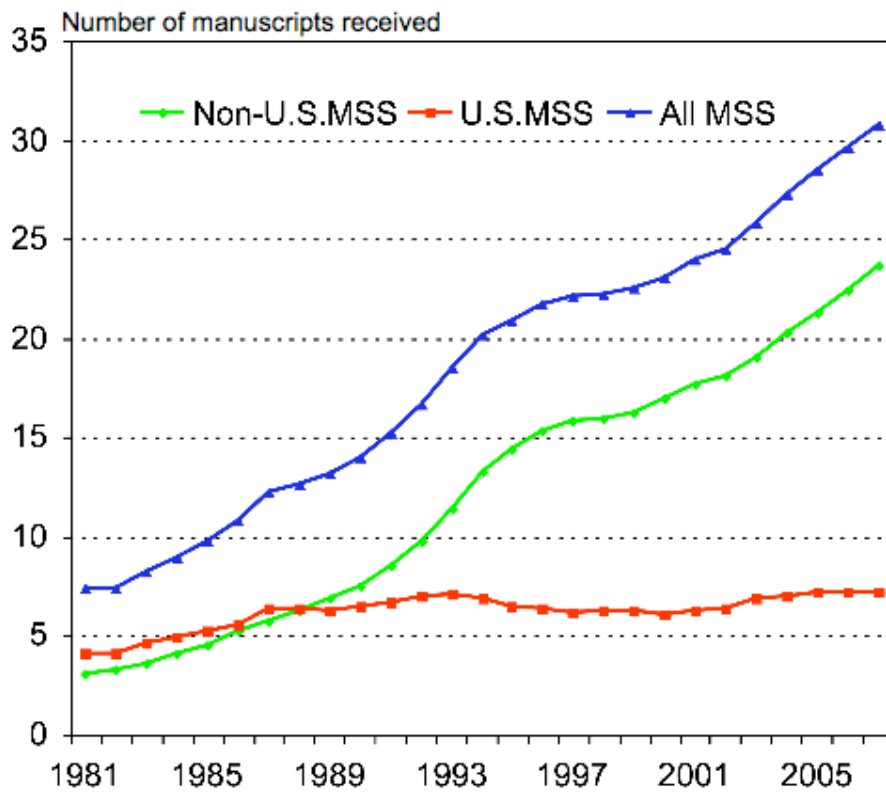


FIG. 3. Number of manuscripts submitted to *Physical Review* and *Physical Review Letters* from 1981 to 2007 by US and non-US authors. The classification is based on the address of the corresponding author. (Comments submitted to *Physical Review Letters* are not included for 1981-1992; PRL Comments, but not Replies, are included for 1993-2007.)

PERCENTAGE OF TeX PUBLISHED ARTICLES 1990 - 2007

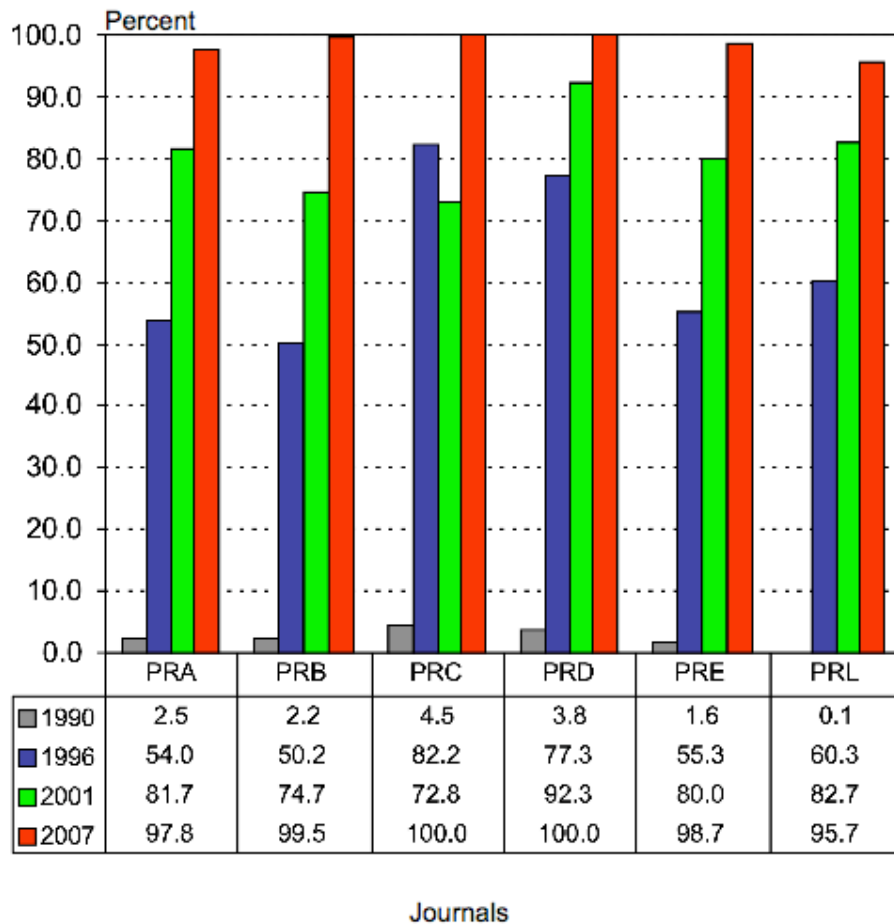


FIG. 4. Percentage of the published articles in the various journals published in $L^A_{\text{TEX}} / \text{REV}_{\text{TEX}} / \text{MS}$ Word compuscripts (using the authors' files in the composition process). 1990 statistics given for *Physical Review E* are those for its predecessor, *Physical Review A15*.